

## ***EMD – Enzensberger Multimedia Development***

### ***EMD Composite FileWriter***

***1.0.0.1***

Limitation of this version:

Only two encoder codecs are supported:

Mpeg4: 3ivx codecs <http://www.3ivx.com>

Mpeg2: mainconcept encoder <http://www.mainconcept.com>

**In general, it is possible to use any codec you have installed !**

#### *Overview:*

EMD Composite FileWriter filter is a special DirectShow FileWriter filter to be able to “Pause” capture graphs connected to live audio/video sources.

Run mode: audio/video samples/frames are recorded to specified capture file.

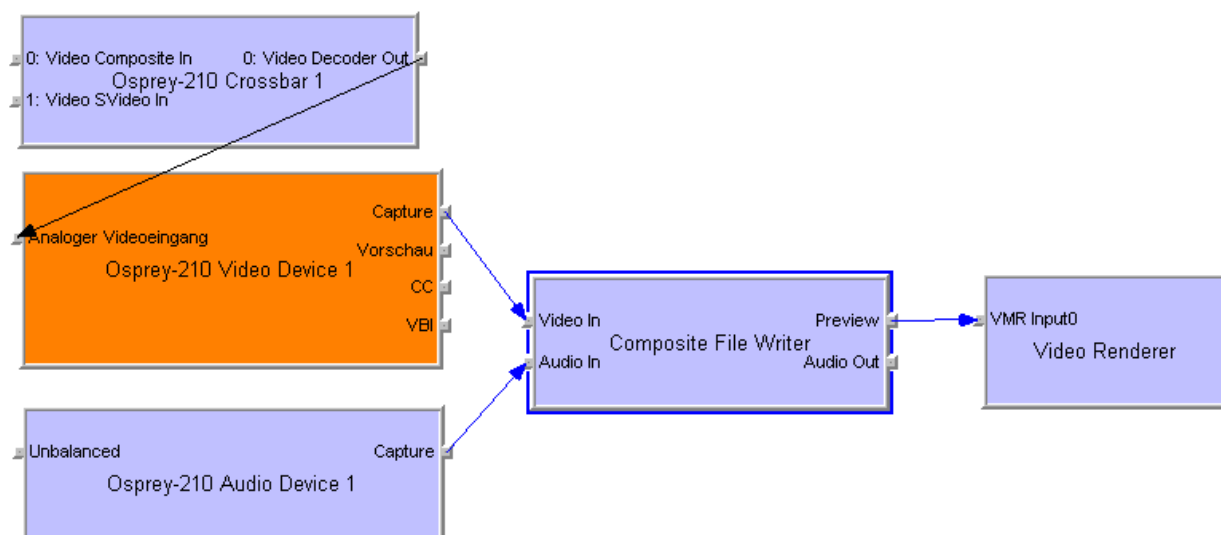
Pause mode: no more samples/frames are recorded while preview is still running.

Run mode: after switch from pause to run mode again, new samples/frames are recorded to same capture file using append mode.

How to use EMD Composite FileWriter filter – short description for test with GraphEdit app.

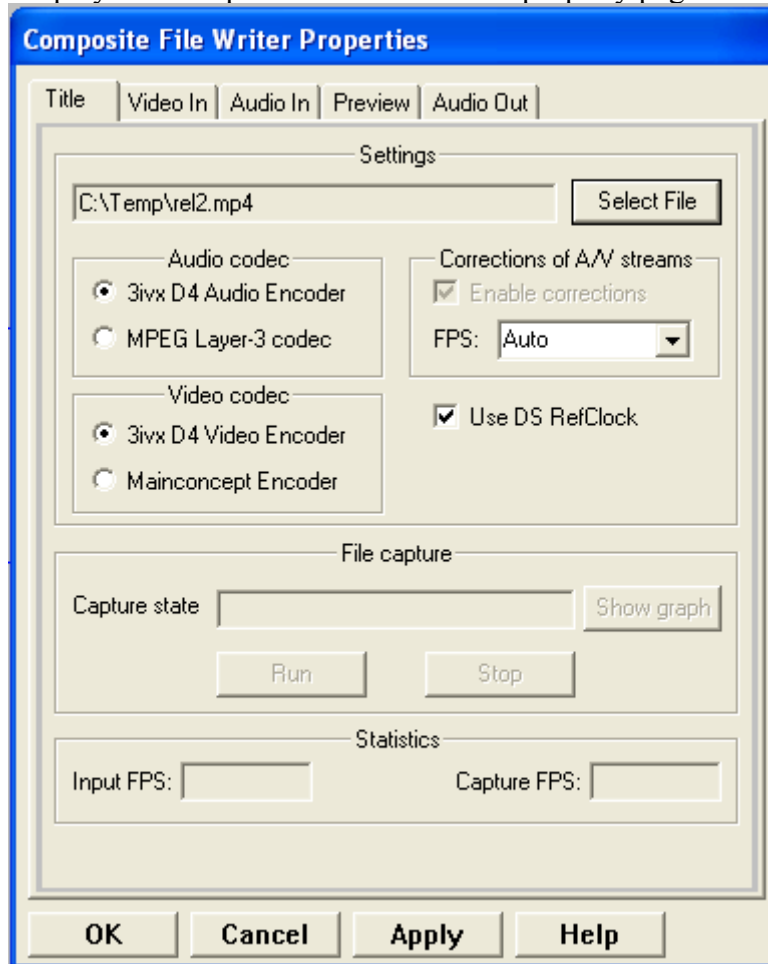
#### *Step 1:*

Use GraphEdit to build similar source graph



Step 2:

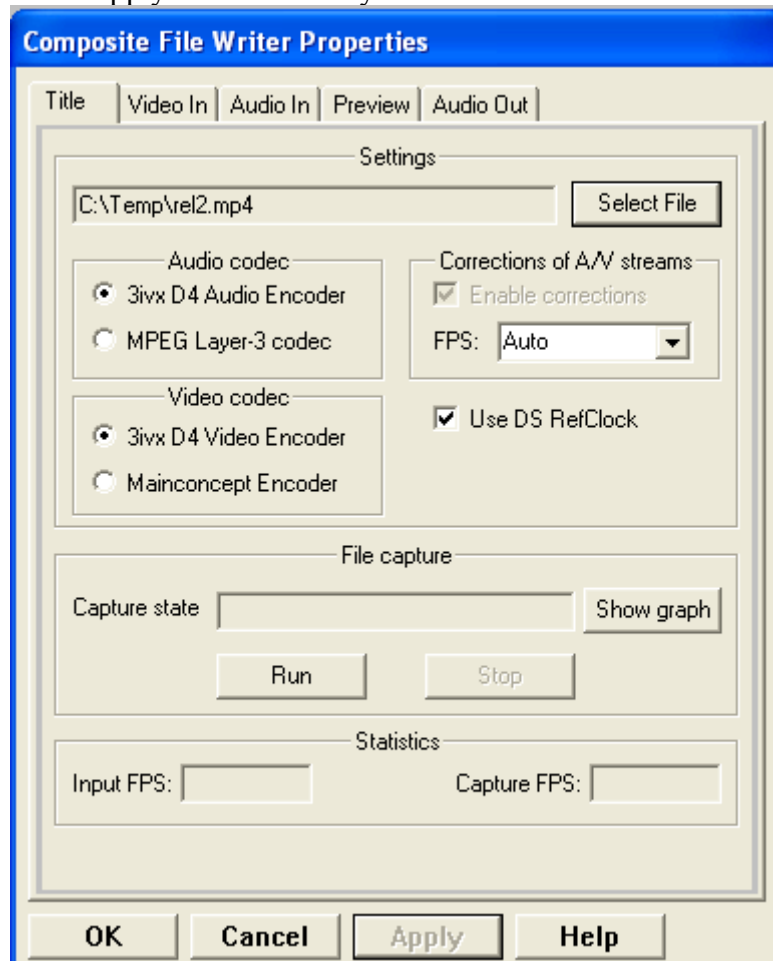
Display the Composite FileWriter filter property page



Select codec and capture file name ( <SelectFile> button)

Step 3:

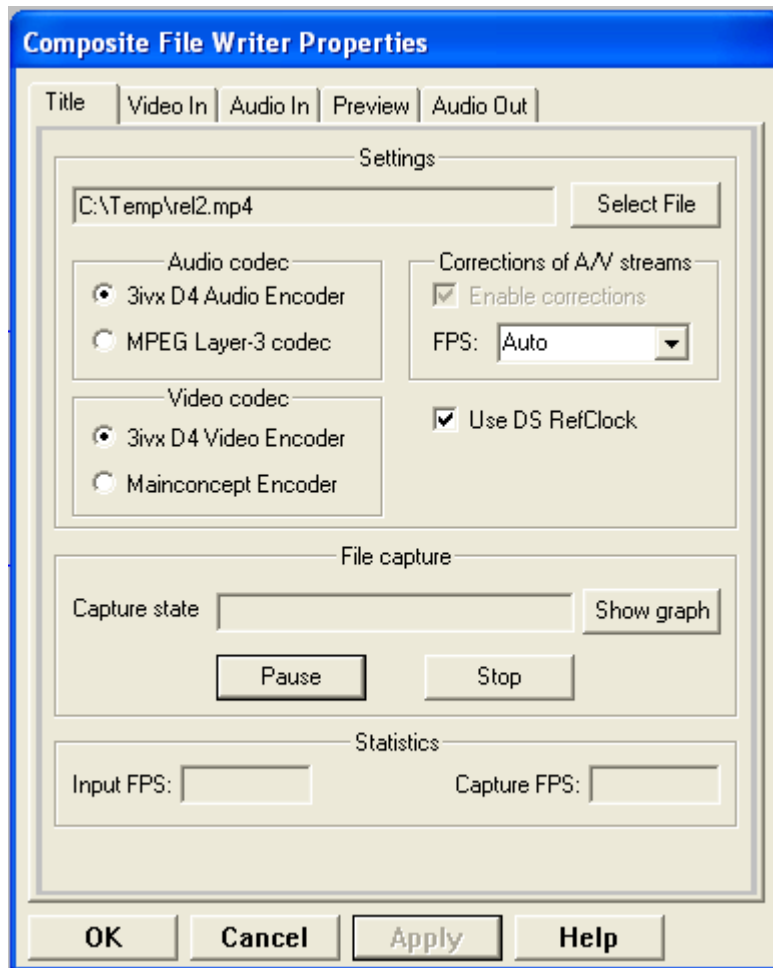
Use <Apply> button to set your selections.



Now the <Run> button is enabled.

*Step 4:*

Press "Run" button on property page. Name of this button depends from capture state: if capture running then it's name is "Pause" and vice versa



**Press "Play the Graph" button on GraphEdit toolbar. Capturing started**

*Step 5:*

Press "Pause" button on property page.

Wait some time.

Press "Run" button on property page.

*Step 6:*

Press "Stop" button on property page. File will be closed.